



Better Air is Our Business®

AmericanAirFilter® **HeavyDuty™**

***Sturdy, Economical, Disposable
Panel Filters with Woven Glass Retainer***

Designed for general air filtration applications with light to medium dust loading conditions, AAF HeavyDuty™ disposable panel filters are engineered for sturdy, economical performance and ease of use. Available in a wide range of sizes and two thickness configurations, these filters are used in all types of HVAC systems to protect the coils from dirt and as prefilters to extend the life of higher efficiency filters. HeavyDuty filters offer superior strength and durability in any application.

Disposable Panel Filters With Glass Retainer

High Arrestance

HeavyDuty filters are constructed with heavy duty, premium grade fiberglass media, and have a skin on the air-entering and air-leaving sides. A woven glass retainer is bonded to the clean air side of each filter.

Premium grade fiberglass has more fibers to ensure HeavyDuty media offers higher arrestance and cleans the air better than competitive filters. Premium grade fiberglass also offers higher dust holding capacity which means longer service life and lower operating costs.

Sturdy Construction, Longer Filter Life

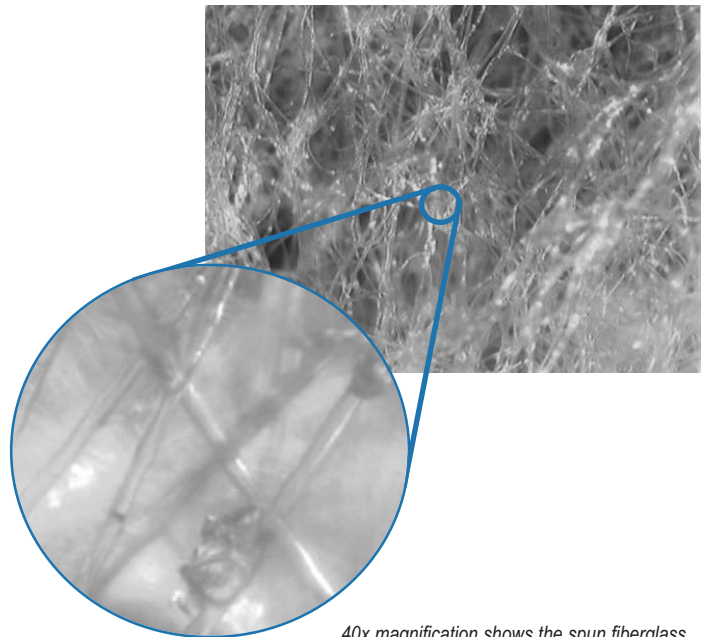
Compression Resistant Media

The woven glass retainer and skin provide excellent support for the fiberglass. The heavier construction of the fiberglass allows a better adhesive bond with the retainer.

Compression resistant glass fibers decrease media pad deterioration allowing a slower rise in resistance as the filter collects dirt particles. A slower rise in resistance extends the life of the filter.

Frame Strength

A continuous adhesive bond between the media pad and recycled kraft frame maximizes construction strength to reduce handling damage and maintain structured integrity in operation.



40x magnification shows the spun fiberglass skin of the HeavyDuty filter pad.

Woven Glass Retainers

The woven glass retainers used on the HeavyDuty filters add strength to the filter assembly while maintaining a metal free product. The HeavyDuty panel filters are safer to handle than filters made with "bottlecap" retainers that break easily and have sharp points and edges that can cut fingers and hands. The bond strength of the glass retainer to the frame is also superior.

AmericanAirFilter®

HeavyDuty™

Ordering Information

Sizes and Options

HeavyDuty panel filters are available in a wide range of standard sizes; 1" and 2" thickness. Standard sizes are listed in the table at right.

Rated Initial Resistance (In. W.G.)

| | 1" | 2" |
|----------|-----|-----|
| @300 FPM | .10 | .13 |
| @500 FPM | .20 | .28 |
| @625 FPM | NA | .38 |

Recommended final resistance is .50" w.g. for each thickness.

Average Arrestance @300 FPM

| | 1" | 2" |
|--|--------|--------|
| | 70-75% | 80-85% |

All performance data is based on the ASHRAE 52.1-1992 test method. Performance tolerances conform to Section 7.4 of ARI Standard 850-93.

Underwriters Laboratories Classification

HeavyDuty filters are UL Class 2. Testing was performed according to UL standard 900 and CAN-4-S111.

Operating Temperature Limits

HeavyDuty filters are designed for continuous operating temperatures up to 150°F (66°C).

Packing/Shipping

All filters are packed 12 per carton. All sizes can be shipped UPS.

Standard Sizes

| Nominal Size (Inches) | 1" Thick | 2" Thick |
|-----------------------|----------|----------|
| 8 x 16 | • | |
| 8 x 20 | • | |
| 8 x 24 | • | |
| 8 x 30 | • | |
| 10 x 10 | • | • |
| 10 x 20 | • | • |
| 10 x 24 | • | |
| 10 x 25 | • | |
| 10 x 30 | • | |
| 12 x 12 | • | |
| 12 x 16 | • | |
| 12 x 18 | • | |
| 12 x 20 | • | • |
| 12 x 24 | • | • |
| 12 x 25 | • | |
| 12 x 30 | • | |
| 12 x 30 5/8 | • | |
| 12 x 36 | • | |
| 14 x 14 | • | |
| 14 x 20 | • | • |
| 14 x 24 | • | |
| 14 x 25 | • | |
| 14 x 30 | • | |
| 15 x 20 | • | • |
| 15 x 25 | • | |
| 15 x 30 | • | |
| 15 x 30 5/8 | • | |
| 16 x 16 | • | • |
| 16 x 20 | • | • |
| 16 x 22 1/4 | • | |
| 16 x 24 | • | • |
| 16 x 25 | • | • |
| 16 x 30 | • | |
| 18 x 18 | • | |
| 18 x 20 | • | |
| 18 x 24 | • | • |
| 18 x 25 | • | |
| 18 x 30 | • | |
| 19 x 27 | • | |
| 20 x 20 | • | • |
| 20 x 22 1/4 | • | |
| 20 x 24 | • | • |
| 20 x 25 | • | • |
| 20 x 30 | • | |
| 22 x 22 | • | |
| 24 x 24 | • | • |
| 24 x 30 | • | |
| 25 x 25 | • | • |

Actual Thickness: 1" - 13/16"; 2" - 1 3/4"





Better Air is Our Business®

AmericanAirFilter® **HeavyDuty™ P**

***Sturdy, Economical, Disposable Panel Filters
with Expanded Metal Retainer***

Designed for general air filtration applications with light to medium dust loading conditions, AAF HeavyDuty™ P disposable panel filters are engineered for sturdy, economical performance and ease of use. Available in a wide range of sizes and two thickness configurations, these filters are used in all types of HVAC systems to protect the coils from dirt and as prefilters to extend the life of higher efficiency filters. HeavyDuty P filters offer superior strength and durability in any application.

High Arrestance Synthetic Media

HeavyDuty P filters are constructed with heavy duty, premium grade synthetic media. An expanded metal retainer is bonded to the clean air side of each filter.

HeavyDuty P filter media is made from tough polyester fibers bonded with a fire retardant resin to form a high loft media structured for performance, economy, and long service life. The large amount of fiber surface area and complex maze of fiber intersections provides an intricate fiber structure which holds more dirt with less resistance.



Disposable Panel Filters With Expanded Metal Retainer

Frame Strength

The one-piece frame design ensures corner integrity during handling, installation, and operation. It is made from durable, high strength chipboard that will stand up to harsh conditions.

Each HeavyDuty P filter is assembled with continuous beads of hot-melt adhesive applied to the frame's inside perimeter on both the air-entering and air-leaving sides, to firmly secure the pad/retainer assembly to the frame.

Expanded Metal Retainers

The expanded metal retainers used on the HeavyDuty P filters are corrosion-resistant. Expanded metal retainers are also safer to handle than "bottlecap" retainers that break easily and have sharp points and edges that can cut fingers and hands.

AmericanAirFilter[®]

HeavyDuty™ P

Ordering Information

HeavyDuty™ P filters are available in a wide range of sizes to meet the specific needs of the wholesale industry; 1" and 2" thickness.

Standard Sizes - 1"

| Nominal Size (Inches) | Actual Size (Inches) |
|---------------------------|---|
| 8 x 20 x 1 | 7 $\frac{7}{8}$ x 19 $\frac{7}{8}$ x $\frac{3}{4}$ |
| 8 x 28 x 1 | 7 $\frac{7}{8}$ x 27 $\frac{7}{8}$ x $\frac{3}{4}$ |
| 8 x 30 x 1 | 7 $\frac{7}{8}$ x 29 $\frac{7}{8}$ x $\frac{3}{4}$ |
| 10 x 10 x 1 | 9 $\frac{7}{8}$ x 9 $\frac{7}{8}$ x $\frac{3}{4}$ |
| 10 x 20 x 1 | 9 $\frac{7}{8}$ x 19 $\frac{7}{8}$ x $\frac{3}{4}$ |
| 10 x 24 x 1 | 9 $\frac{7}{8}$ x 23 $\frac{7}{8}$ x $\frac{3}{4}$ |
| 10 x 30 x 1 | 9 $\frac{7}{8}$ x 29 $\frac{7}{8}$ x $\frac{3}{4}$ |
| 12 x 12 x 1 | 11 $\frac{7}{8}$ x 11 $\frac{7}{8}$ x $\frac{3}{4}$ |
| 12 x 16 x 1 | 11 $\frac{7}{8}$ x 15 $\frac{7}{8}$ x $\frac{3}{4}$ |
| 12 x 18 x 1 | 11 $\frac{7}{8}$ x 17 $\frac{7}{8}$ x $\frac{3}{4}$ |
| 12 x 20 x 1 | 11 $\frac{7}{8}$ x 19 $\frac{7}{8}$ x $\frac{3}{4}$ |
| 12 x 24 x 1 | 11 $\frac{7}{8}$ x 23 $\frac{7}{8}$ x $\frac{3}{4}$ |
| 12 x 25 x 1 | 11 $\frac{7}{8}$ x 24 $\frac{7}{8}$ x $\frac{3}{4}$ |
| 12 x 30 x 1 | 11 $\frac{7}{8}$ x 29 $\frac{7}{8}$ x $\frac{3}{4}$ |
| 12 x 36 x 1 | 11 $\frac{7}{8}$ x 35 $\frac{7}{8}$ x $\frac{3}{4}$ |
| 14 x 20 x 1 | 13 $\frac{7}{8}$ x 19 $\frac{7}{8}$ x $\frac{3}{4}$ |
| 14 x 24 x 1 | 13 $\frac{7}{8}$ x 23 $\frac{7}{8}$ x $\frac{3}{4}$ |
| 14 x 25 x 1 | 13 $\frac{7}{8}$ x 24 $\frac{7}{8}$ x $\frac{3}{4}$ |
| 14 x 30 x 1 | 13 $\frac{7}{8}$ x 29 $\frac{7}{8}$ x $\frac{3}{4}$ |
| 15 x 20 x 1 | 14 $\frac{7}{8}$ x 19 $\frac{7}{8}$ x $\frac{3}{4}$ |
| 15 x 25 x 1 | 14 $\frac{7}{8}$ x 24 $\frac{7}{8}$ x $\frac{3}{4}$ |
| 15 x 30 $\frac{5}{8}$ x 1 | 14 $\frac{7}{8}$ x 30 $\frac{1}{2}$ x $\frac{3}{4}$ |
| 16 x 20 x 1 | 15 $\frac{7}{8}$ x 19 $\frac{7}{8}$ x $\frac{3}{4}$ |
| 16 x 24 x 1 | 15 $\frac{7}{8}$ x 23 $\frac{7}{8}$ x $\frac{3}{4}$ |
| 16 x 25 x 1 | 15 $\frac{7}{8}$ x 24 $\frac{7}{8}$ x $\frac{3}{4}$ |
| 16 x 30 x 1 | 15 $\frac{7}{8}$ x 29 $\frac{7}{8}$ x $\frac{3}{4}$ |
| 18 x 18 x 1 | 17 $\frac{7}{8}$ x 17 $\frac{7}{8}$ x $\frac{3}{4}$ |
| 18 x 20 x 1 | 17 $\frac{7}{8}$ x 19 $\frac{7}{8}$ x $\frac{3}{4}$ |
| 18 x 24 x 1 | 17 $\frac{7}{8}$ x 23 $\frac{7}{8}$ x $\frac{3}{4}$ |
| 18 x 25 x 1 | 17 $\frac{7}{8}$ x 24 $\frac{7}{8}$ x $\frac{3}{4}$ |
| 18 x 30 x 1 | 17 $\frac{7}{8}$ x 29 $\frac{7}{8}$ x $\frac{3}{4}$ |
| 20 x 20 x 1 | 19 $\frac{7}{8}$ x 19 $\frac{7}{8}$ x $\frac{3}{4}$ |
| 20 x 24 x 1 | 19 $\frac{7}{8}$ x 23 $\frac{7}{8}$ x $\frac{3}{4}$ |
| 20 x 25 x 1 | 19 $\frac{7}{8}$ x 24 $\frac{7}{8}$ x $\frac{3}{4}$ |
| 20 x 30 x 1 | 19 $\frac{7}{8}$ x 29 $\frac{7}{8}$ x $\frac{3}{4}$ |
| 22 x 22 x 1 | 21 $\frac{7}{8}$ x 21 $\frac{7}{8}$ x $\frac{3}{4}$ |
| 24 x 24 x 1 | 23 $\frac{7}{16}$ x 23 $\frac{7}{16}$ x $\frac{3}{4}$ |
| 24 x 25 x 1 | 23 $\frac{7}{8}$ x 24 $\frac{7}{8}$ x $\frac{3}{4}$ |
| 24 x 30 x 1 | 23 $\frac{7}{16}$ x 29 $\frac{7}{8}$ x $\frac{3}{4}$ |
| 25 x 25 x 1 | 24 $\frac{5}{8}$ x 24 $\frac{5}{8}$ x $\frac{3}{4}$ |

Packing/Shipping

All filters are packed 12 per carton. All sizes can be shipped UPS.

Standard Sizes - 2"

| Nominal Size (Inches) | Actual Size (Inches) |
|-----------------------|---|
| 10 x 20 x 2 | 9 $\frac{1}{2}$ x 19 $\frac{1}{2}$ x 1 $\frac{3}{4}$ |
| 12 x 20 x 2 | 11 $\frac{1}{2}$ x 19 $\frac{1}{2}$ x 1 $\frac{3}{4}$ |
| 12 x 24 x 2 | 11 $\frac{3}{8}$ x 23 $\frac{3}{8}$ x 1 $\frac{3}{4}$ |
| 14 x 20 x 2 | 13 $\frac{3}{8}$ x 19 $\frac{3}{8}$ x 1 $\frac{3}{4}$ |
| 14 x 25 x 2 | 13 $\frac{1}{2}$ x 24 $\frac{1}{2}$ x 1 $\frac{3}{4}$ |
| 15 x 20 x 2 | 14 $\frac{1}{2}$ x 19 $\frac{1}{2}$ x 1 $\frac{3}{4}$ |
| 16 x 16 x 2 | 15 $\frac{1}{2}$ x 15 $\frac{1}{2}$ x 1 $\frac{3}{4}$ |
| 16 x 20 x 2 | 15 $\frac{1}{2}$ x 19 $\frac{1}{2}$ x 1 $\frac{3}{4}$ |
| 16 x 24 x 2 | 15 $\frac{3}{8}$ x 23 $\frac{3}{8}$ x 1 $\frac{3}{4}$ |
| 16 x 25 x 2 | 15 $\frac{1}{2}$ x 24 $\frac{1}{2}$ x 1 $\frac{3}{4}$ |
| 18 x 24 x 2 | 17 $\frac{3}{8}$ x 23 $\frac{3}{8}$ x 1 $\frac{3}{4}$ |
| 18 x 25 x 2 | 17 $\frac{1}{2}$ x 24 $\frac{1}{2}$ x 1 $\frac{3}{4}$ |
| 20 x 20 x 2 | 19 $\frac{1}{2}$ x 19 $\frac{1}{2}$ x 1 $\frac{3}{4}$ |
| 20 x 24 x 2 | 19 $\frac{3}{8}$ x 23 $\frac{3}{8}$ x 1 $\frac{3}{4}$ |
| 20 x 25 x 2 | 19 $\frac{1}{2}$ x 24 $\frac{1}{2}$ x 1 $\frac{3}{4}$ |
| 24 x 24 x 2 | 23 $\frac{3}{8}$ x 23 $\frac{3}{8}$ x 1 $\frac{3}{4}$ |
| 25 x 25 x 2 | 24 $\frac{1}{2}$ x 24 $\frac{1}{2}$ x 1 $\frac{3}{4}$ |

Nominal Special Sizes

Filters must be ordered in whole number nominal sizes, i.e., 10" x 20". Actual sizes are $\frac{3}{8}$ " less than nominal sizes for both height and width, i.e., 9 $\frac{5}{8}$ " x 19 $\frac{5}{8}$ ". Minimum size available is 7" x 10" (nominal).

Exact Special Sizes

Filters must be ordered in the exact size required.

Minimum size available is 6 $\frac{1}{2}$ " x 9 $\frac{1}{2}$ ". Maximum size available is 28" x 32" or 24" x 36". Call 888.AAF.2003 to order double filters for larger sizes.

Operating Data

Underwriters Laboratories Classification

HeavyDuty P filters are UL Class 2.

Testing was performed according to UL standard 900 and CAN-4-S111.

Operating Temperature Limits

HeavyDuty P filters are designed for continuous operating temperatures up to 150°F (66°C).





Better Air is Our Business®

AmericanAirFilter® **HeavyDuty™ XM**

***Sturdy, Economical,
Disposable Panel Filters
with Expanded Metal Retainer***

Designed for general air filtration applications with light to medium dust loading conditions, AAF HeavyDuty™ XM disposable panel filters are engineered for sturdy, economical performance and ease of use. Available in a wide range of sizes and two thickness configurations, these filters are used in all types of HVAC systems to protect the coils from dirt and as prefilters to extend the life of higher efficiency filters. HeavyDuty XM filters offer superior strength and durability in any application.

Disposable Panel Filters With Expanded Metal Retainer

High Arrestance Fiberglass Media

HeavyDuty XM filters are constructed with heavy duty, premium grade fiberglass media, and have a skin on the air-entering and air-leaving sides. An expanded metal retainer is bonded to the clean air side of each filter.

Premium grade fiberglass has more fibers to ensure HeavyDuty XM media offers higher arrestance and cleans the air better than competitive filters. Premium grade fiberglass also offers higher dust holding capacity which means longer service life and lower operating costs.

Sturdy Construction, Longer Filter Life

Compression Resistant Media

The woven glass retainer and skin provide excellent support for the fiberglass. The heavier construction of the fiberglass allows a better adhesive bond with the retainer.

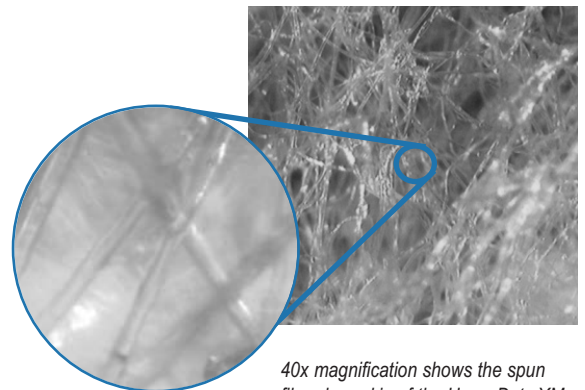
Compression resistant glass fibers decrease media pad deterioration allowing a slower rise in resistance as the filter collects dirt particles. A slower rise in resistance extends the life of the filter.



Frame Strength

The one-piece frame design ensures corner integrity during handling, installation, and operation. It is made from durable, high strength chipboard that will stand up to harsh conditions.

Each HeavyDuty XM filter is assembled with continuous beads of hot-melt adhesive applied to the frame's inside perimeter on both the air-entering and air-leaving sides, to firmly secure the pad/retainer assembly to the frame.



40x magnification shows the spun fiberglass skin of the HeavyDuty XM filter pad.

Expanded Metal Retainers

The expanded metal retainers used on the HeavyDuty XM filters are corrosion-resistant. Expanded metal retainers are also safer to handle than "bottlecap" retainers that break easily and have sharp points and edges that can cut fingers and hands.

AmericanAirFilter®

HeavyDuty™ XM

Ordering Information

HeavyDuty™ XM filters are available in a wide range of sizes to meet the specific needs of the wholesale industry; 1" and 2" thickness.

Standard Sizes - 1"

| Nominal Size (Inches) | Actual Size (Inches) |
|---------------------------|---|
| 8 x 20 x 1 | 7 $\frac{7}{8}$ x 19 $\frac{1}{8}$ x $\frac{3}{4}$ |
| 8 x 28 x 1 | 7 $\frac{7}{8}$ x 27 $\frac{7}{8}$ x $\frac{3}{4}$ |
| 8 x 30 x 1 | 7 $\frac{7}{8}$ x 29 $\frac{7}{8}$ x $\frac{3}{4}$ |
| 10 x 10 x 1 | 9 $\frac{7}{8}$ x 9 $\frac{7}{8}$ x $\frac{3}{4}$ |
| 10 x 20 x 1 | 9 $\frac{7}{8}$ x 19 $\frac{7}{8}$ x $\frac{3}{4}$ |
| 10 x 24 x 1 | 9 $\frac{7}{8}$ x 23 $\frac{7}{8}$ x $\frac{3}{4}$ |
| 10 x 30 x 1 | 9 $\frac{7}{8}$ x 29 $\frac{7}{8}$ x $\frac{3}{4}$ |
| 12 x 12 x 1 | 11 $\frac{7}{8}$ x 11 $\frac{7}{8}$ x $\frac{3}{4}$ |
| 12 x 16 x 1 | 11 $\frac{7}{8}$ x 15 $\frac{7}{8}$ x $\frac{3}{4}$ |
| 12 x 18 x 1 | 11 $\frac{7}{8}$ x 17 $\frac{7}{8}$ x $\frac{3}{4}$ |
| 12 x 20 x 1 | 11 $\frac{7}{8}$ x 19 $\frac{7}{8}$ x $\frac{3}{4}$ |
| 12 x 24 x 1 | 11 $\frac{7}{8}$ x 23 $\frac{7}{8}$ x $\frac{3}{4}$ |
| 12 x 25 x 1 | 11 $\frac{7}{8}$ x 24 $\frac{7}{8}$ x $\frac{3}{4}$ |
| 12 x 30 x 1 | 11 $\frac{7}{8}$ x 29 $\frac{7}{8}$ x $\frac{3}{4}$ |
| 12 x 36 x 1 | 11 $\frac{7}{8}$ x 35 $\frac{7}{8}$ x $\frac{3}{4}$ |
| 14 x 20 x 1 | 13 $\frac{7}{8}$ x 19 $\frac{7}{8}$ x $\frac{3}{4}$ |
| 14 x 24 x 1 | 13 $\frac{7}{8}$ x 23 $\frac{7}{8}$ x $\frac{3}{4}$ |
| 14 x 25 x 1 | 13 $\frac{7}{8}$ x 24 $\frac{7}{8}$ x $\frac{3}{4}$ |
| 14 x 30 x 1 | 13 $\frac{7}{8}$ x 29 $\frac{7}{8}$ x $\frac{3}{4}$ |
| 15 x 20 x 1 | 14 $\frac{7}{8}$ x 19 $\frac{7}{8}$ x $\frac{3}{4}$ |
| 15 x 25 x 1 | 14 $\frac{7}{8}$ x 24 $\frac{7}{8}$ x $\frac{3}{4}$ |
| 15 x 30 $\frac{1}{2}$ x 1 | 14 $\frac{7}{8}$ x 30 $\frac{1}{2}$ x $\frac{3}{4}$ |
| 16 x 20 x 1 | 15 $\frac{7}{8}$ x 19 $\frac{7}{8}$ x $\frac{3}{4}$ |
| 16 x 24 x 1 | 15 $\frac{7}{8}$ x 23 $\frac{7}{8}$ x $\frac{3}{4}$ |
| 16 x 25 x 1 | 15 $\frac{7}{8}$ x 24 $\frac{7}{8}$ x $\frac{3}{4}$ |
| 16 x 30 x 1 | 15 $\frac{7}{8}$ x 29 $\frac{7}{8}$ x $\frac{3}{4}$ |
| 18 x 18 x 1 | 17 $\frac{7}{8}$ x 17 $\frac{7}{8}$ x $\frac{3}{4}$ |
| 18 x 20 x 1 | 17 $\frac{7}{8}$ x 19 $\frac{7}{8}$ x $\frac{3}{4}$ |
| 18 x 24 x 1 | 17 $\frac{7}{8}$ x 23 $\frac{7}{8}$ x $\frac{3}{4}$ |
| 18 x 25 x 1 | 17 $\frac{7}{8}$ x 24 $\frac{7}{8}$ x $\frac{3}{4}$ |
| 18 x 30 x 1 | 17 $\frac{7}{8}$ x 29 $\frac{7}{8}$ x $\frac{3}{4}$ |
| 20 x 20 x 1 | 19 $\frac{7}{8}$ x 19 $\frac{7}{8}$ x $\frac{3}{4}$ |
| 20 x 24 x 1 | 19 $\frac{7}{8}$ x 23 $\frac{7}{8}$ x $\frac{3}{4}$ |
| 20 x 25 x 1 | 19 $\frac{7}{8}$ x 24 $\frac{7}{8}$ x $\frac{3}{4}$ |
| 20 x 30 x 1 | 19 $\frac{7}{8}$ x 29 $\frac{7}{8}$ x $\frac{3}{4}$ |
| 22 x 22 x 1 | 21 $\frac{7}{8}$ x 21 $\frac{7}{8}$ x $\frac{3}{4}$ |
| 24 x 24 x 1 | 23 $\frac{7}{8}$ x 23 $\frac{7}{8}$ x $\frac{3}{4}$ |
| 24 x 25 x 1 | 23 $\frac{7}{8}$ x 24 $\frac{7}{8}$ x $\frac{3}{4}$ |
| 24 x 30 x 1 | 23 $\frac{7}{8}$ x 29 $\frac{7}{8}$ x $\frac{3}{4}$ |
| 25 x 25 x 1 | 24 $\frac{5}{8}$ x 24 $\frac{5}{8}$ x $\frac{3}{4}$ |

Packing/Shipping

All filters are packed 12 per carton. All sizes can be shipped UPS.

Standard Sizes - 2"

| Nominal Size (Inches) | Actual Size (Inches) |
|-----------------------|---|
| 10 x 20 x 2 | 9 $\frac{1}{2}$ x 19 $\frac{1}{2}$ x 1 $\frac{3}{4}$ |
| 12 x 20 x 2 | 11 $\frac{1}{2}$ x 19 $\frac{1}{2}$ x 1 $\frac{3}{4}$ |
| 12 x 24 x 2 | 11 $\frac{1}{2}$ x 23 $\frac{1}{2}$ x 1 $\frac{3}{4}$ |
| 14 x 20 x 2 | 13 $\frac{1}{2}$ x 19 $\frac{1}{2}$ x 1 $\frac{3}{4}$ |
| 14 x 25 x 2 | 13 $\frac{1}{2}$ x 24 $\frac{1}{2}$ x 1 $\frac{3}{4}$ |
| 15 x 20 x 2 | 14 $\frac{1}{2}$ x 19 $\frac{1}{2}$ x 1 $\frac{3}{4}$ |
| 16 x 16 x 2 | 15 $\frac{1}{2}$ x 15 $\frac{1}{2}$ x 1 $\frac{3}{4}$ |
| 16 x 20 x 2 | 15 $\frac{1}{2}$ x 19 $\frac{1}{2}$ x 1 $\frac{3}{4}$ |
| 16 x 24 x 2 | 15 $\frac{1}{2}$ x 23 $\frac{1}{2}$ x 1 $\frac{3}{4}$ |
| 16 x 25 x 2 | 15 $\frac{1}{2}$ x 24 $\frac{1}{2}$ x 1 $\frac{3}{4}$ |
| 18 x 24 x 2 | 17 $\frac{1}{2}$ x 23 $\frac{1}{2}$ x 1 $\frac{3}{4}$ |
| 18 x 25 x 2 | 17 $\frac{1}{2}$ x 24 $\frac{1}{2}$ x 1 $\frac{3}{4}$ |
| 20 x 20 x 2 | 19 $\frac{1}{2}$ x 19 $\frac{1}{2}$ x 1 $\frac{3}{4}$ |
| 20 x 24 x 2 | 19 $\frac{1}{2}$ x 23 $\frac{1}{2}$ x 1 $\frac{3}{4}$ |
| 20 x 25 x 2 | 19 $\frac{1}{2}$ x 24 $\frac{1}{2}$ x 1 $\frac{3}{4}$ |
| 24 x 24 x 2 | 23 $\frac{1}{2}$ x 23 $\frac{1}{2}$ x 1 $\frac{3}{4}$ |
| 25 x 25 x 2 | 24 $\frac{1}{2}$ x 24 $\frac{1}{2}$ x 1 $\frac{3}{4}$ |

Nominal Special Sizes

Filters must be ordered in whole number nominal sizes, i.e., 10" x 20". Actual sizes are $\frac{3}{8}$ " less than nominal sizes for both height and width, i.e., 9 $\frac{5}{8}$ " x 19 $\frac{5}{8}$ ". Minimum size available is 7" x 10" (nominal).

Exact Special Sizes

Filters must be ordered in the exact size required.

Minimum size available is 6 $\frac{1}{2}$ " x 9 $\frac{1}{2}$ ". Maximum size available is 28" x 32" or 24" x 36". Call 888.AAF.2003 to order double filters for larger sizes.

Operating Data

Rated Initial Resistance

| (in. w.g.) | 1" | 2" |
|------------|-----|-----|
| @300 FPM | .10 | .13 |
| @500 FPM | .20 | .28 |
| @625 FPM | NA | .38 |

Recommended final resistance is .50 in. w.g. for each thickness.

Average Arrestance @300 FPM:

| 1" | 2" |
|--------|--------|
| 70-75% | 80-85% |

All performance data is based on the ASHRAE 52.1-1992 test method. Performance tolerances conform to Section 7.4 of ARI Standard 850-93.

Underwriters Laboratories

Classification

HeavyDuty XM filters are UL Class 2.

Testing was performed according to UL standard 900 and CAN-4-S111.

Operating Temperature Limits

HeavyDuty XM filters are designed for continuous operating temperatures up to 150°F (66°C).



10300 Ormsby Park Place Suite 600
Louisville, Kentucky 40223-6169

www.aafintl.com
Customer Service 888.AAF.2003
Fax 888.223.6500



AAF has a policy of continuous product research and improvement and reserves the right to change design and specifications without notice.

ISO Certified 9001:2000

©2008 AAF International

The USGBC Member logo is a trademark owned by the U.S. Green Building Council and is used by permission.